



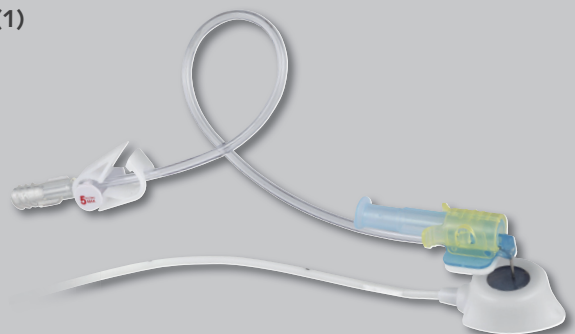
Unique pressure injectable implantable port kit

Vascular Access

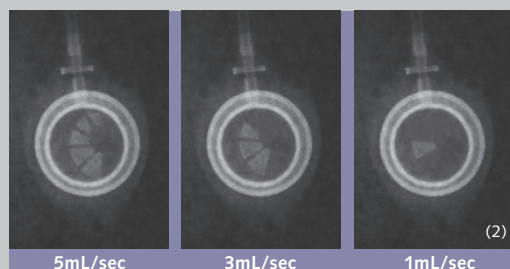
Maximum injection flow rates detectable by X Ray (From 1 to 5 mL/sec)



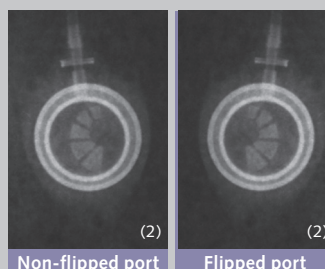
- ▶ Silicone filled suture holes
- ▶ Wide choice of silicone and polyurethane catheters from 5F to 10F
- ▶ Ready-to-use kit dedicated to ultrasound guided venipuncture technique ⁽¹⁾
- ▶ Safety Huber Needle, PPS[®] CT, compatible with contrast media injections



MAXIMUM FLOW RATE INJECTION DETECTABLE BY X-RAY



DETECTION OF FLIPPED PORT



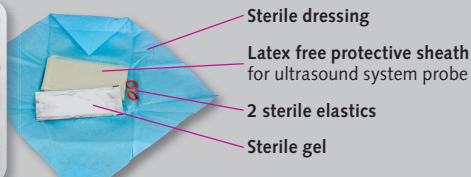
	Serie	Product code	Catheter	Outer Diameter	Inner Diameter	Introducer	Dimensions of the port/weight	Port internal volume (mL)	Maximum flow rate recommended with 25 cm length catheter	Viscosity / Maximum concentration of iodine recommended for contrast media
Pediatric or brachial	Micro	2005SEE	Silicone	1.65	0.65	5F	22 x 17 mm 2.9g	0.2	1 mL/sec	6 cP or 300 mgI/mL
		2105SEE							1 mL/sec	
Adult	Mini	3007SEE	Silicone	2.60	1.02	7F	26 x 21 mm 5.5g	0.4	3 mL/sec	10 cP or 350 mgI/mL
		3107SEE							3 mL/sec	
		3017SEE	Polyurethane	2.30	1.45				3 mL/sec	
		3117SEE							3 mL/sec	
	Standard	3008SEE	Silicone	2.40	1.20	8F	31 x 22 mm 7.7g	0.6	5 mL/sec	
		3108SEE							5 mL/sec	
High Flow	Standard	4008SEE	Silicone	2.40	1.20	9F	31 x 22 mm 7.7g	0.6	5 mL/sec	
		4108SEE							5 mL/sec	
		4018SEE	Polyurethane	2.65	1.70				5 mL/sec	
		4118SEE							5 mL/sec	
High Flow	Standard	4019SEE	Polyurethane	3.00	1.90	10F	31 x 22 mm 7.7g	0.6	5 mL/sec	
		4119SEE							5 mL/sec	
High Flow	Standard	40010SEE	Silicone	3.18	1.57	10F	31 x 22 mm 7.7g	0.6	5 mL/sec	
		41010SEE							5 mL/sec	

PRE-CONNECTED PORT

Port composition	Polyoxymethylene and titanium, silicone septum
Catheter length	60 cm
Maximum Huber needle diameter recommended (Gauge) for contrast media injection	19G or 20G, and for product codes 2005SEE and 2105SEE 20G or 22G

COMPLETE SET CONTENT

- 1 hybrid port
- 1 radiopaque silicone or polyurethane catheter (graduated every cm with a mark every 5 cm from 0 cm to 40 cm long)
- 2 connecting rings (only one for pre-connected references)
- 1 straight Huber needle (22G or 23G)
- 1 vein pick
- 1 flushing connector
- 1 echogenic introducer needle (18G or 20G*)
- 1 peelable introducer (12 cm* or 17 cm)
- 1 J guidewire marked every 10 cm (40 cm* or 60 cm)
- 1 tunneler (18 cm* or 23 cm)
- 1 10 mL syringe
- 1 Raulerson system
- 1 safety Huber needle compatible with high pressure injection of contrast media, PPS® CT (20G or 22G*)



*For pediatric references

(1) In accordance with 2010 HAS Checklist, 2012 SF2H recommendations and NICE guidelines since 2002.
 (2) Non-contractual pictures. (3) See instruction for use CD00675.

MR
 MR Conditional
 All SEESITE® references
 are MR conditional⁽³⁾

DC00076 / 001